

## Deadly & Dangerous



**White Tail**

Found under bark, litter, crevices outdoors but also indoors. Bite causes pain and ulceration to the skin.



**Red-back**

Webs built in dry & sheltered areas subfloors, garages, around building materials & rubbish



**Male Funnel-Web**

Found in dark, moist conditions,



**Female Funnel-Web**

Long Spinnerets

## Toxic & Poisonous



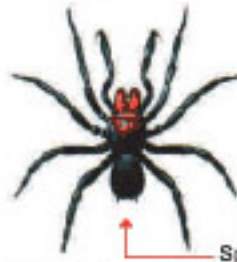
**Common Black House Spider**

Found in rock walls, tree trunks and crevices s.a. window frames, guttering, webs untidy with funnel like entrance

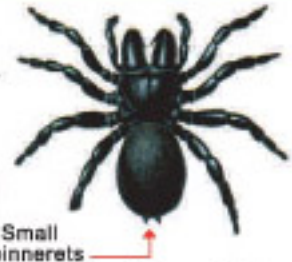


**Wolf Spider**

Union Jack on cephalothorax. Ground Dwelling.



**Male Mouse Spider**



**Female Mouse Spider**

Often mistaken for a funnel web Ground Dwelling, Fangs & head cephalothorax enlarged



**Garden Orb-Weaver**

They're only a nuisance spider. Thick webs in the garden, beneficial.



**Saint Andrew's Cross**

They're only a nuisance spider. Thick webs in the garden, beneficial.



**Huntsman**

Lives under bark in daytime, and often enters homes.



**Male Trap-Door**



**Female Trap-Door**

Also often mistaken for the Funnel Web Spider Ground Dwelling, often found in dry areas s.a. lawns (holes in lawns).